

Installation and Operating Instructions

Zip Hydroboil Duo

Instant boiling and chilled water dispenser with 5 Micron filter (Std.)

Model options include, Frame and Tray kit and sub micron filter (see page 2 for details)



Std. Model : 310111 - 2000 W

Std. Model : 320111 - 3500 W

Std. Model : 330111 - 2300 W



Zip[®]

Instant Boiling Water

Contents

Model options2
Read These Warnings First3
Installation Requirements3, 4 & 5
Cleaning5
Replacing the Filter5
Setting the Energy Saver Timer6
Trouble Shooting7
End of life disposal7
Spare Parts List & Diagram (310111)8 & 9
Spare Parts List & Diagram (320111 and 330111)10 & 11
Warranty Information12

Model options

Part No	Capacity Boiling/Chilled	Element Watts/amps	Finish #	Filter *	Boiling cups /hr	Chilling glasses /hr	Classification
310110	5L/3.2L (B/C)	1800/ 8.3	White	5 Micron	120	90	150/125
320110	16.5L/3.2L (B/C)	3300/14.4	White	5 Micron	217	90	320/125
330110	16.5L/3.2L (B/C)	2100/ 9.5	White	5 Micron	140	90	240/125
310111	5L/3.2L (B/C)	1800/ 8.3	Stainless	5 Micron	120	90	150/125
320111	16.5L/3.2L (B/C)	3300/14.4	Stainless	5 Micron	217	90	320/125
330111	16.6L/3.2L (B/C)	2100/ 9.5	Stainless	5 Micron	140	90	240/125

Stainless steel finish is Standard with optional finish in white

* **Sub Micron filter cartridge** : available on all models (Pt No.910240) - *order separately*

Frame and Tray kit options : available on all models (see P9 & P11) - *order separately*

NOTE:

1 Cup = 167mls and 1 Glass = 200mls

All plumbing must comply with AS3500.4.1 & AS3500.4.2

All electrical must comply with AS3350.1, AS3350.2.15

Read these warnings first

Safety

Do not allow young children, handicapped or infirm persons, to use the Zip Hydroboil Duo without supervision. Young children must not be allowed to play with the appliance.

Refrigerant

The Zip Hydroboil Duo Chilling unit contains 134A refrigerant under pressure. No part of the unit should be exposed to a naked flame. Maintenance of the refrigeration unit must be carried out by an accredited service provider or qualified refrigeration mechanic.

Qualifications

If any power cord or plug is damaged it must be repaired only by a qualified technician. To avoid hazards, all installation procedures must be carried out by a suitably qualified tradesperson. The power cord and general power outlet must be in a safe visible position for connection.

Venting

Sometimes steam and / or boiling water may discharge through a vent outlet. The vent pipe must be plumbed to a safe visible position via a Tundish.

Lifting

Take care when lifting the Zip Hydroboil Duo unit. Some units may exceed safe lifting limits. Do not lift without assistance. The weights of the units are given in the table under the heading "Installation Requirements".

Airflow

The ambient temperatures this unit should operate within are 5°C - 35°C. Proper air circulation must be provided. The system will operate satisfactorily only if the recommended air gaps are provided, these are 150mm on the top and left hand side and 50mm on the right hand side. Make sure that the ventilation grilles on the Right hand side are not obstructed. Failure to do this may cause the Hydroboil Duo to overheat and operate inefficiently.

Altitude

The setpoint Temp. is factory set at 98°C. If the unit is installed at altitude and excessive steam is being vented, the set point can be adjusted down to an appropriate temperature by a Zip Service provider. This is checked upon installation.

Refer to the Hydrotap workshop manual for instructions.

Filter Control

The Zip Hydroboil Duo filter control is preset to 6000 Litres or 12 months to provide trouble-free flow and operation in most installations. Local water quality conditions may require an alteration to this capacity. In areas where the water has a high concentration of sediment, the preset litre capacity, or monthly duration, may be shortened to avoid poor flow, taste or odour situations. In areas where the water quality is above average, lengthening the preset capacity may be desirable, but not essential. If any of these changes is needed, follow the instructions on page 5 or contact your Zip Service Provider.

Frost Protection

If this appliance is located where the ambient air temperature could fall below 5°C do not turn off the electric power. This safeguard does not offer the same protection to the connecting pipework and fittings.

Installation Environment Considerations

This unit is intended for indoor use only and should never be installed outdoors or exposed to the elements of nature. This unit must not be positioned in an area that may be cleaned by a water jet and must not be cleaned by a water jet.

Installation requirements

Before installing ensure that the following have been provided at the installation site:

- Sufficient space to install the appliance in accordance with these Installation Instructions. A table of dimensions and weights is given below.
- A water supply connection, with isolating valve.
- Cold water pressure between 0.7 bar (70kPa) and 7 bar (700kPa). If higher than 7bar (700kPa) then install a 5bar (500kPa) pressure reduction valve.
- Ensure the appliance is installed in a horizontal position and securely fixed to a wall.

Installation continued

WARNING: To avoid a hazard due to instability of the appliance, it must be fixed in accordance with these instructions

- For all installations (including frame mounting) the Hydroboil Duo must be bolted to a wall (see the template supplied)
- **ENSURE THE MOUNTING SURFACE IS ADEQUATE TO SUPPORT THE TOTAL WEIGHT OF THE APPLIANCE** (below) Do not install on a plaster wall unless extra noggins or an external support board have been fitted.
- Refer to the installation template on the carton for the correct fixing locations. Each unit has three mounting points situated 27mm from the top of the appliance. The Max recommended bolt size is M6 (1/4")
- Power supply 220-240 Volt AC with a G.P.O. positioned less than 1200mm from the lower left hand corner.
- For 2.0 and 2.3 kWh Models a 10 amp G.P.O. is required. (see table below)
- For 3.5kWh model a 15 amp G.P.O. is required (see table below), or an isolating switch in the fixed wiring and attached to a secure surface. This switch must provide all-pole disconnection and a contact separation of at least 3 mm installed in accordance with the wiring rules.
- For appliances fitted with a plug and cord the Plug must be accessible after installation.
- If required, check for altitude set point adjustment . (see altitude note on P3.)

STD MODEL	kWh MAX.	HEIGHT MM	DEPTH MM	WIDTH MM	PACKAGED WEIGHT	WEIGHT FULL	WEIGHT EMPTY	TOP & LHS CLEARANCE	RHS CLEARANCE
310111	2.0	430	280	650	34 kg	42 kg	32 kg	150 mm	50 mm
330111	2.3	580	350	700	42 kg	64 kg	40 kg	150 mm	50 mm
320111	3.5	580	350	700	42 kg	64 kg	40 kg	150 mm	50 mm

Connecting the water supply

.To prevent sediment from entering the Zip Hydroboil Duo at connection, flush water through the supply line thoroughly before connection to the Zip Hydroboil Duo. With the cover removed check the filter is in place and secure. Connect the water supply (Only use new hose sets, discard any old hoses) turn on water and check for leaks. If no leaks are evident turn the power on.

Testing and commissioning

use these buttons to scroll through the Menu



use these buttons to activate and de-activate the programme selected

Filter Flush Mode

The display screen will show which model you have. Have a bucket, sink or similar container (not supplied) at the ready to hold a quantity of water that is ejected while the Filter Flush Mode is in operation. After removing the access cover on the Left hand side and exposing the filter cartridge (located to the right hand side of the cartridge is a fixed flush line, approx 600mm long and the flush line stop cock) Place the free end of the flush line into the bucket, sink or container (not supplied). Turn "ON" both water and electricity supplies and open the flush line stop cock.

The display will show Filter Flush Mode. To activate press adjust ^ . Run at least 7.5 Ltrs of water through to activate the filter membrane. Press the adjust ^ button again to stop the Filter Flush Mode. Turn OFF the Filter Flush stop cock and re-locate the tube and stop cock in the filter compartment.

When starting, both Boiling and Chilled cycles activate simultaneously after calibration has taken place, the descriptions below indicate what happens during each cycle.

Boiling

Before using the Hydroboil check the unit has reached an adequate temperature. Sufficient time must be allowed for the unit to reach boiling point. This will vary on the size of the unit.

Installation continued

Energy Saving

If Energy Saver Settings are required, the instructions for installing these are described on page 6 “Setting the Energy Saver Timer”. Ensure that the clock matches your local time. If not refer to page 6 .

Cleaning

Do not use strong, corrosive, spray or abrasive cleaners. Clean with a soft cloth or brush and mild soap and water.

Do not spray water over the appliance.

The appliance must never be located near, or cleaned with water jets.

Replacing the filter

The Zip Hydroboil Duo notifies when filter replacement is due. The default setting is 6000 Ltrs or 12 months, but this can be set in increments of 1000Ltr from 1000Ltr to 10000Ltrs, or from 1-14 months in 30 day increments. Depending on local water quality conditions and usage, the filter may require changing anywhere from 1000 Ltrs to 10000 Ltrs. You may also need to replace the filter if you notice unpleasant odours or tastes.

Some water may drip from the filter head (socket) during replacement. Keep a bucket and towel handy to catch drips and mop up any spills.

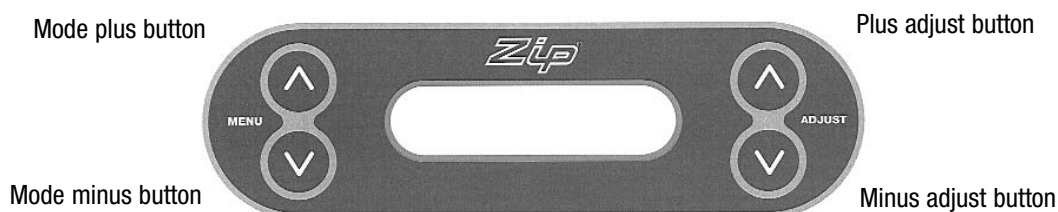
To change the Filter:

1. Scroll through the screen menu to “Filter Flush Off” this isolates the water supply.
2. Remove the filter cover on the left hand side of the unit and relieve the system pressure via the filter flush stop cock, (located to the right of the filter) a quick open and close will do.
3. Grasp filter cartridge and twist right to left one quarter turn until it stops.
4. Ease cartridge downwards to detach it from the filter head (socket).
5. Do not tilt the cartridge as dirty water may spill from it if tilted.
6. Unpack replacement cartridge and write today’s date where shown on the label.
7. Avoid touching the filter “O” rings and filter opening as this may cause bacterial contamination of the cartridge.
8. Align cartridge tabs with the slots on the under-side of the filter head.
9. Slide cartridge upward into head and rotate left to right until it stops.
10. Locate the filter flush hose situated behind the filter cartridge and run to a container ready for flushing. Open the flush hose tap lever. On the control panel press adjust \wedge , this will start the water flushing the cartridge. Allow at least 7.5 Ltrs of water to run through to activate the filter and then press adjust \wedge to stop the flow.
11. Isolate the filter flush stop cock and re-fit behind the filter cartridge.
12. Wipe up any spills and dispose of spent filter cartridge and packaging thoughtfully.
13. (a) If using ‘Litres filtered’, scroll through the menu to “Litres Filtered”, press adjust \wedge to reset litre counter. Then it asks “are you sure”. Press adjust \wedge again to lock in the command. After approx 10 seconds it will default to the selected mode.

(b) If using ‘Filter life’, scroll through to “Filter Use (days)” press adjust \wedge to reset timer counter. Then it asks “are you sure”. Press adjust \wedge again to lock in the command. After approx 10 seconds it will default to the selected mode.
14. Before finishing, it is important to scroll through the screen menu and exit from the “Filter Flush Off” mode, otherwise the water supply will remain isolated.

Warning: If the Zip Hydroboil Duo is switched off for a long period of time (e.g. more than a weekend), run water through the chilled water outlet for at least 5 minutes before consumption. The unit must be switched on for 30minutes before being used.

Setting the energy saver timer



Normal Operation

Set Time

To change time, press either Mode \wedge or Mode \vee button until Set Time is on the display screen. Press \wedge Adjust button to increase time or \vee Adjust button to decrease time. Time increases or decrease in increments of one minute. Hold the Adjust buttons down for rapid increases or decreases. The time will be displayed in 24Hr mode.

Set Day

Press either Mode \wedge or Mode \vee button until Set Day is displayed.

Press \wedge Adjust or \vee Adjust to select day.

Filter Life (factory set at 6000 Ltrs)

Press either Mode \wedge or Mode \vee button until Filter Life is displayed.

Press \wedge Adjust button to increase Filter Life or \vee Adjust button to decrease Filter Life.

Filter Life increases in 1000 Ltr increments to a maximum of 10000 Ltrs.

Press \wedge Adjust and "Filter disabled " will appear - Note: This functions not applicable for these appliances.

Reset Litres Filtered and months used

This function is to reset the Filter Change display after a filter has reached the end of its life (refer to "Replace Filter Instructions" section of this document).

Press either Mode \wedge or Mode \vee button until "Litres Filtered" is displayed. Press \wedge Adjust once and "Reset Counter" will be displayed, press \wedge Adjust button once and "Are You Sure" will be displayed.

Press \wedge Adjust once and "Don't forget to flush the filter" will appear. The "Litres Filtered" will be reset to 0.

Activating Sleep Mode

This mode allows the Hydroboil Duo to go into Energy Saving mode. In this mode the unit will go to "sleep" after a pre-determined period of inactivity. Press either Mode \wedge or Mode \vee button until "Sleep Mode" is displayed. Press \wedge Adjust once to select 2 Hours or twice to select 4 Hours. When the period of inactivity passes, the display will show "Sleep Mode".

To de-activate the sleep mode, press any button on the display or drain sufficient hot water to energise the system (i.e. Normal operation) and then allow sufficient time for the water to reach the set temperature.

Activating On / Off Mode

Press the Mode \wedge or Mode \vee button until "Monday On" is displayed. To set the time for the unit to turn on press \wedge Adjust button until required time is reached.

To set the time for the unit to turn Off press Mode \wedge button once and "Monday Off" will be displayed. Now press \wedge Adjust until required time is reached.

If each individual day is to have an "On / Off" time, these steps need to be repeated for each day and for each On / Off time.

To de-activate the Off mode, press any button and drain sufficient hot water to energise the system (i.e. Normal operation) and then allow sufficient time for the water to reach the set temperature.

Trouble Shooting

Symptom	Possible Cause	Solution
No water flow.	Water supply isolated.	Check water supply is on.
	Water supply not connected.	Check to ensure plumbing connection is made.
	Power supply not connected.	Check power plug is correctly fitted and switch is turned on.
	Possible internal fault.	Contact local Zip Service Provider.
Slow water recovery after use.	Filter may require replacement.	Check filter usage on LCD screen, if “filter change” is displayed follow instructions on page 5.
Water not hot.	Unit is in Sleep Mode.	Open Hot tap.
	Unit has just come out of, or is in, OFF cycle.	
	Possible internal fault.	Contact local Zip Service Provider.
Water not chilled.	Excessive use, unit refilling or chilling down to temperature.	
	Unit is in OFF cycle	
	Possible internal fault.	Contact local Zip Service Provider.
Alternating display messages:	More than one fault identified at the same time	Record the number and type of faults Contact local Zip Service Provider
Water continues to boil	High Altitude	Contact local Zip Service provider, ref. Altitude P3 Refer to the Hydrotap Workshop manual for setting instructions
Warning: Check Mains Supply	No Water Blocked Filter Poor water quality System reset.	Check for blockages Change Filter Change Filter Turn power OFF for 20sec then turn power ON

End of life disposal



The use of this crossed out wheeled bin logo indicates that this product needs to be disposed of separately to any other household waste.

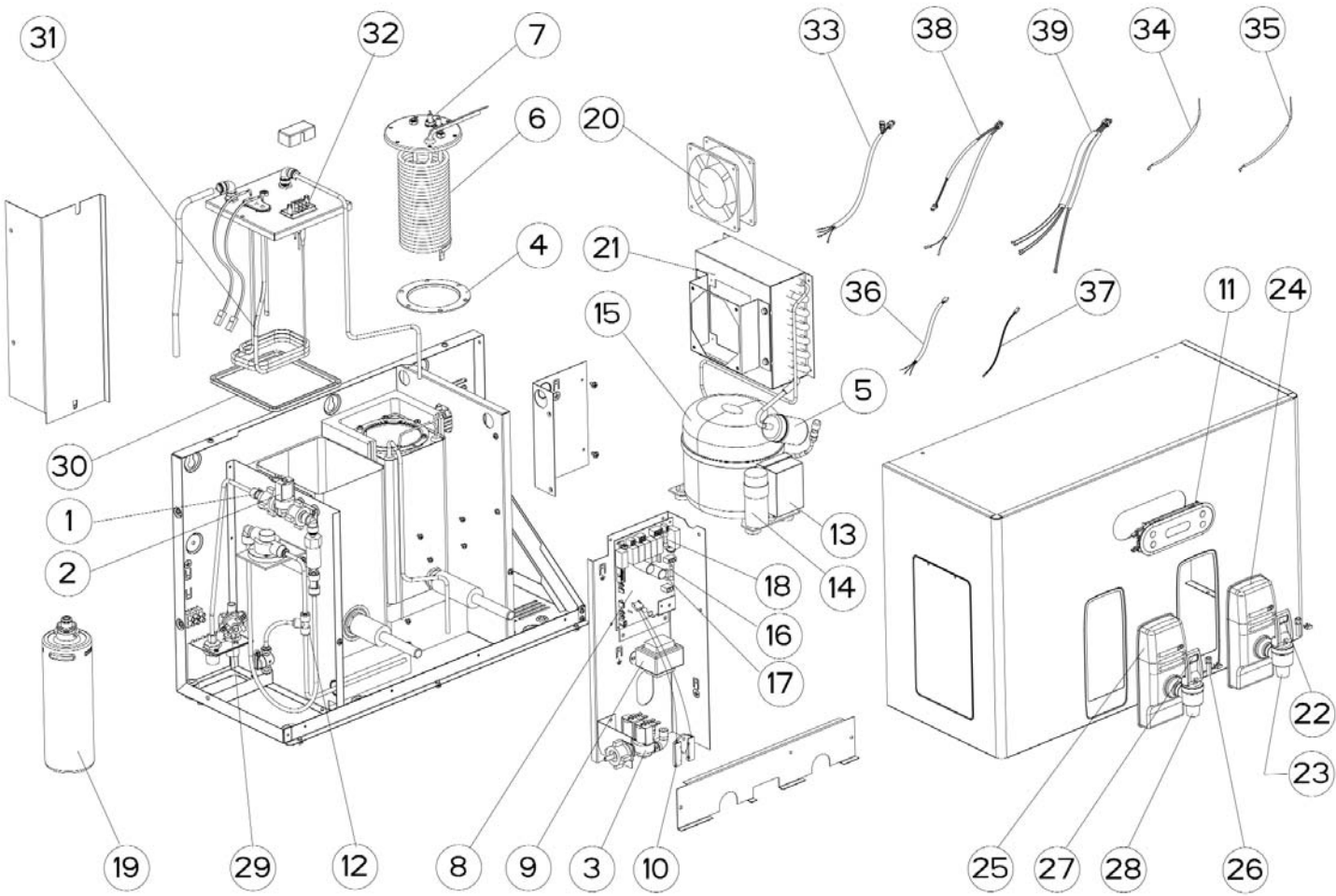
Within each of the European Union member countries, provisions have been made for the collection and recycling of unwanted electrical and electronic equipment. Outside of the EU it will be necessary to dispose of this product at your local community waste collection or recycling centre.

In order to help preserve our environment we ask that you dispose of this product correctly. Please contact your local city council for collection centre details

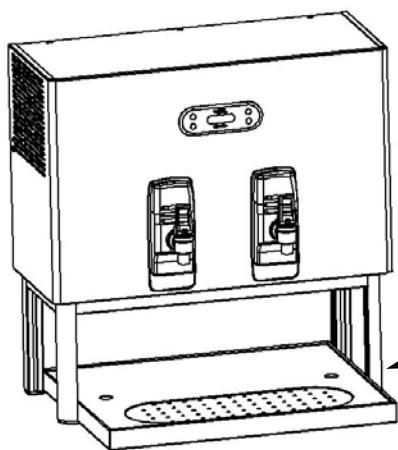
Spare parts List model 310111

Item	Kit No	Description
1	90756	Plumbing and Fittings Kit 150/125
2	90614	Safety Solenoid Kit
3	90762	Double Solenoid Kit Hot=0.5li/min, Cold=1.3li/min
4	90758	Gasket /Grommets Kit 150/125
5	90753	Filter-Dryer Kit Danfoss Type
6	90757	Evaporator Kit 150/125
7	90635	Level Sensor Kit Cold Tank
8	90773	PCB Kit 150/125 Wall Mounted
9	90623	Transformer Kit
10	90763	Leak Sensor Kit 300mm lg
11	90772	Control Panel Kit
12	90754	Stop Valve & Fittings-Filter
13	90636	Relay Kit-Compressor
14	90437	Capacitor Kit-Compressor
15	90637	Compressor Kit
16	90671	3ag-10amp fuse
17	90670	2ag-10amp fuse
18	90669	2ag-1amp fuse
19	91240	Filter Cartridge Kit
20	90752	Fan Motor Kit w/o Loom
21	90013	Condenser Kit
22	90759	Tap Top Kit Blue 150/125
23	90760	Tap Assy Complete (Blue)
24	90761	Fascia & Lens Kit (Blue)
25	90499	Fascia & Lens Kit (Red)
26	90764	Fascia Light Kit
27	90501	Tap Top Kit (Red)
28	90562	Tap Assy Complete (Red)
29	90579	Overload Kit
30	90617	Gasket & Elbow Kit
31	90619	Element 1800W Kit
32	90770	Level Sensor Kit Hot Tank
33	90751	Loom Multi-Core Cable Kit
34	90633	Cold Sensor Probe Kit (Blue)
35	90620	Hot Sensor Probe Kit (Red)
36	90189	Loom -Level Sensor Kit Hot
37	90185	Loom -Level Sensor Kit Cold
38	90749	Loom Compressor-Fan Kit
39	90750	Loom Kit-Solenoids 150/125

Exploded diagram model 310111



Accessory - Frame and Tray Kit

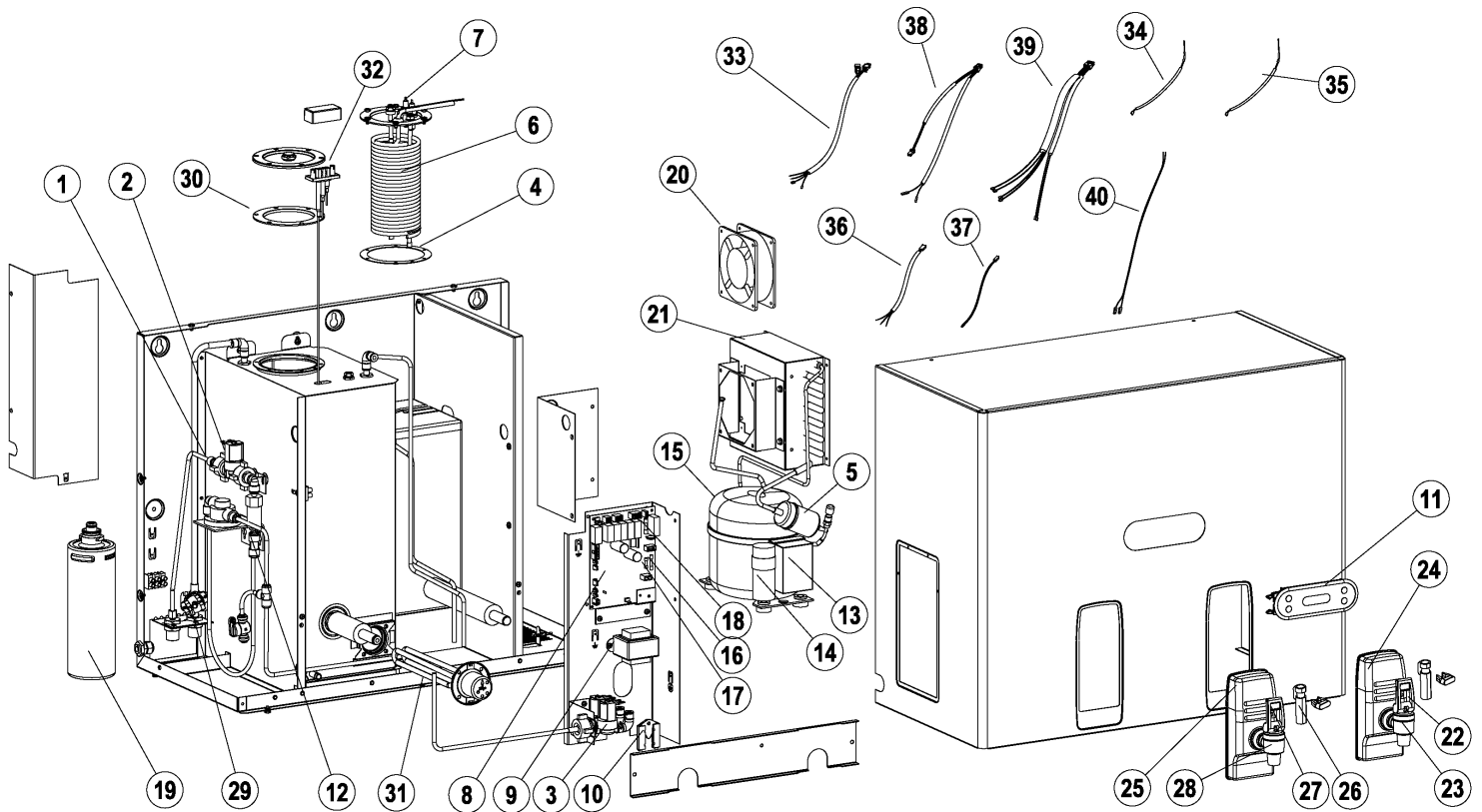


Hydroboil Duo Frame and Tray Kit Pt No 90777

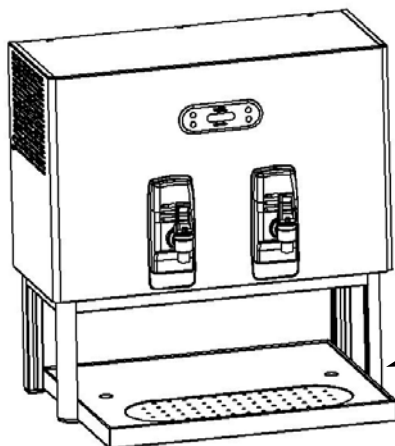
Spare parts list model 320111 and 330111

Item	Kit No	Description
1	90756	Plumbing and Fittings Kit 150/125
2	90614	Safety Solenoid Kit
3	90762	Double Solenoid Kit Hot=0.5li/min; Cold=1.3li/min
4	90758	Gasket /Grommets Kit 150/125
5	90753	Filter-Dryer Kit Danfoss Type
6	90757	Evaporator Kit 150/125
7	90635	Level Sensor Kit Cold Tank
8	90755	PCB Kit 15amp
8	90773	PCB Kit 10amp
9	90623	Transformer Kit
10	90763	Leak Sensor Kit 300mm lg.
11	90772	Control Panel Kit.
12	90754	Stop Valve & Fittings-Filter
13	90636	Relay Kit-Compressor
14	90437	Capacitor Kit-Compressor
15	90637	Compressor Kit
16	90769	3ag-15amp fuse (for 320110)
16	90671	3ag-10amp fuse (for 330110)
17	90670	2ag-10amp fuse
18	90669	2ag-1amp fuse
19	91240	Filter Cartridge Kit
20	90752	Fan Motor Kit w/o Loom
21	90013	Condenser Kit
22	90759	Tap Top Kit Blue 150/125
23	90760	Tap Assy Complete (Blue)
24	90761	Fascia & Lens Kit (Blue)
25	90499	Fascia & Lens Kit (Red)
26	90764	Fascia Light Twin Kit
27	90501	Tap Top Kit (Red)
28	90562	Tap Assy Complete (Red)
29	90579	Overload Kit
30	90765	Gasket & Elbow Kit
31	90766	Element 3.3kW Kit
31	90767	Element 2.1kW Kit
32	90771	Level Sensor Kit Hot Tank
33	90751	Loom Multi-Core Cable Kit
34	90633	Cold Sensor Probe Kit (Blue)
35	90620	Hot Sensor Probe Kit (Red)
36	90189	Loom -Level Sensor Kit Hot
37	90185	Loom -Level Sensor Kit Cold
38	90749	Loom Compressor-Fan Kit
39	90750	Loom Kit-Solenoids 150/125
40	90768	Loom Kit-Overload to Terminal Block-Element

Exploded diagram model 320111 and 330111



Accessory - Frame and Tray Kit



Hydroboil Duo Frame and Tray Kit Pt No: 90778

Warranty Information

Certain warranties may be implied by law into your contract with Zip. The warranty provided below is additional to these implied warranties and nothing set out below shall limit your statutory rights or rights at law.

Zip Heaters (Aust) Pty Ltd warrants that, should any part fail within 12 calendar months of installation, that part will be repaired or replaced free of charge by Zip or its Distributor or Service Provider, except as set out below, provided the appliance is installed and used strictly in accordance with the instructions supplied, and that failure is not due to accident, misuse, abuse, unsuitable water conditions, or to any alteration, modification or repair by any party not expressly nominated by Zip. Zip shall be the sole arbiter of whether there is a part failure intended to be covered by this warranty.

No costs are payable by you other than any mileage or travelling-time charges incurred by a Zip Service Provider or the cost of removal, cartage and re-installation of any component of the appliance if it needs to be returned for repair to Zip or its Distributor.

This warranty does not cover damage resulting from non-operation of the appliance, the use of non-authorized parts or consequential damage to any other goods, furnishings or property.

No warranty applies to the life of any filtration cartridge installed with the appliance as cartridge life may vary according to water quality and the rate of water consumption.

Zip does not exclude, restrict or modify any liability that cannot be excluded, restricted or modified or which cannot, except to a limited extent, be excluded, restricted or modified as between the owner or user and Zip under the laws applicable.

Furthermore, this warranty does not displace any statutory warranty, but, to the extent to which Zip is entitled to do so, the liability of Zip under any statutory warranty will be limited at Zip's option to the replacement of the appliance or supply of equivalent appliance, the payment of the cost of replacing the appliance or acquiring an equivalent appliance, or the payment of the cost of having the appliance repaired or the repair of the appliance.

Registering Your Purchase

Registering your Zip installation on the Zip website may help to establish date of installation should it become necessary to service the appliance under terms of the Zip warranty. To register your installation go to www.zipheaters.com and look under the heading "Warranty".

Head Office

Zip Heaters (Aust) Pty. Ltd.
ABN 46 000 578 727
67 Allingham Street
Condell Park NSW 2200
Postal: Locked Bag 80
Bankstown 1885 Australia

Website: www.zipheaters.com
Facsimile: (02) 9796 3858
Telephone: (02) 9796 3100
Free Call: 1 800 638 633

As Zip policy is one of continuous product improvement, changes to specifications may be made without prior notice. Images in this booklet have been modified and may not be true representations of the finished goods

