

Installation and operating instructions

Zip Aqua Sense Taps

Zip Automatic Taps - Deck and Wall Models.

Note: Surgeon models have a 20 second run-on after use.

Wall Mounted (battery) Model Code: 42226 (Surgeon)
Wall Mounted (mains) Model Code: 42225 (Surgeon)
Deck Mounted (battery) Model Code: 42211
Deck Mounted (mains) Model Code: 42208
Wall Mounted (battery) Model Code: 42222
Wall Mounted (mains) Model Code: 42223
Wall Mounted (mains) Model Code: 42224 (250mm)



Wall installation model



Deck installation model

AquaSense taps are suitable for use in Ablution troughs; Basins and Kitchen sinks

General Fitting Instructions.

1. Preparation

You must read these instructions thoroughly before attempting to install this tap. First check the solenoid valve supplied is suitable for the site water pressure and conditions. The standard valve requires 70kPa - 700kPa water pressure and 5° - 55° C water temperature. If your water pressure is outside the stated range please contact the manufacturer.

2. Pre-Fitting

First turn off the water supply. If possible select an upright position for the valve. (As shown in diagrams) check correct water flow direction when installing solenoid valve. Ensure there is sufficient room to fit the tap head assembly and enough clearance for the 1" spigot and locating peg to fit without interference. Fitting an in-line filter, double check and isolating valve, prior to the valve is mandatory.

3. Installation

Cut the pipework with tube cutters, remove sharp edges and burrs. Purge pipe work to remove all loose debris, fit filter, isolation valve, double check valve and solenoid valve and check all plumbing joints are secure. Take care not to over-tighten any joints. Now fit the sensor tap faucet to the required position in the worktop or sink. secure the faucet with the nut and clamps provided. (Important:: where ever possible you must use the base fixing pins supplied with the faucet). Ensure the flow restrictor in the tap outlet is adequately secured to prevent removal by hand. Firmly secure the flexible water supply hose from the faucet to the solenoid valve and turn on the water supply and check for leaks.

4. Plug and Socket Connections

CAUTION: Mount the battery box / Transformer with care, position where the risk of damage or moisture intrusion is minimal. Ensure the battery pack or powersupply is left disconnected at this stage. Ensure all cable sockets and plug connections are clean and dry. Then connect firmly and ensure that the plug and sockets are secured with the barrel nuts on the fittings.

5. Final Test.

Connect the battery pack or power supply unit. The sensor should now activate the solenoid when your hands are placed under the sensing area.

End of life disposal



The use of this crossed out wheeled bin logo indicates that this product needs to be disposed of separately to any other household waste.

Within each of the European Union member countries, provisions have been made for the collection and recycling of unwanted electrical and electronic equipment. Outside of the EU it will be necessary to dispose of this product at your local community waste collection or recycling centre.

In order to help preserve our environment we ask that you dispose of this product correctly. Please contact your local city council for collection centre details

Components



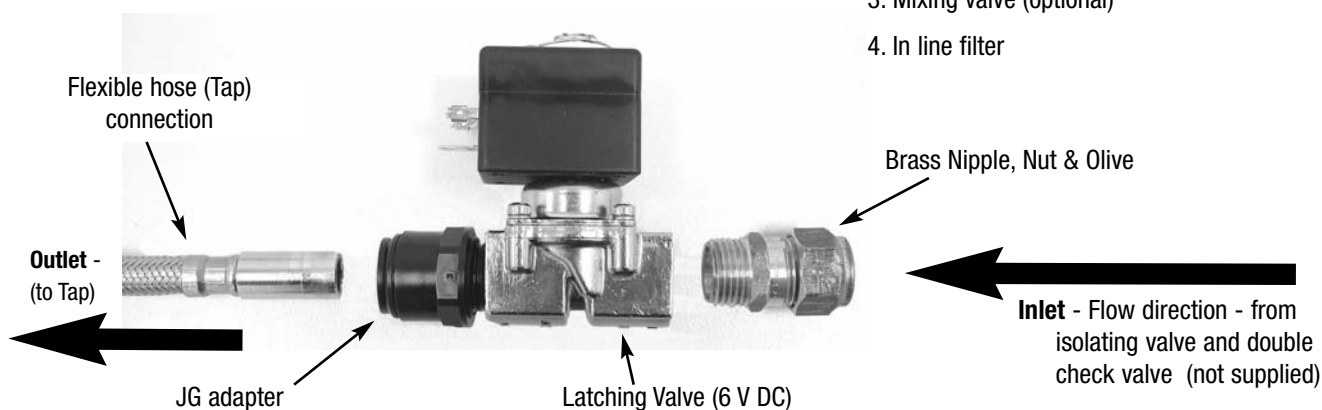
AC Power supply

SUPPLIED:

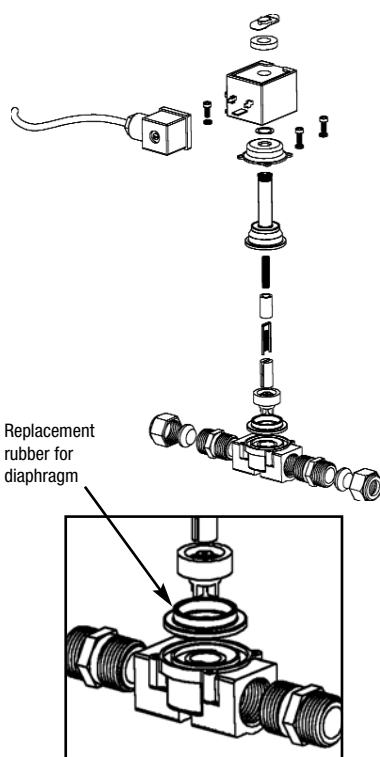
1. Wall or Deck mounted Tap with fixing nut and washers.
2. AC or DC Power supply
3. 6 V DC Latching Valve
4. Brass Nipple Nut and Olive
5. JG 15mm X 1/2 BSP adapter

NOT SUPPLIED:

1. Isolation valve
2. Double check valve.
3. Mixing valve (optional)
4. In line filter



Maintenance



Valve Diaphragm Replacement

Isolate power and water supply.

Remove fixing clip on top of latching valve coil by levering up clip with screw driver and clicking back until clip releases from shaft.

Lift coil, spring clip and spacer from latching valve shaft.

Carefully undo the 4 screws retaining the valve housing. When the last screw is about to be released, grip the valve body and top section as it is spring loaded.

Carefully separate the top section containing the spring and plungers from the lower body. The diaphragm should now be visible. Lift it out of position.

Remove the centre plastic piece from the rubber diaphragm. Fit the new diaphragm to the plastic centre. Replace it in the same orientation.

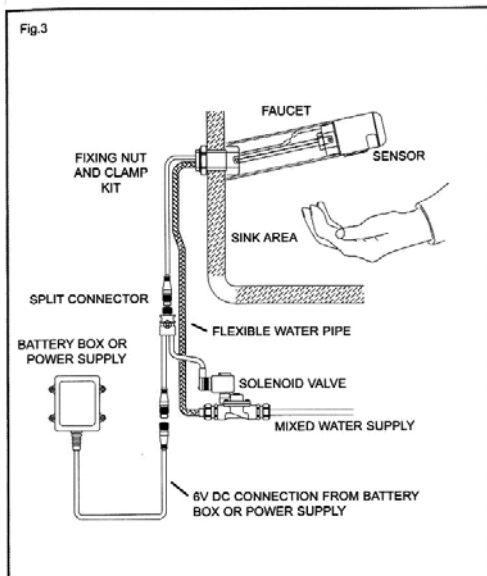
Re-assemble in the reverse of above. Note the position of all parts in the diaphragm for correct assembly. To order quote Zip part number 90279 Diaphragm Kit.

The valve will require periodic cleaning and servicing. please contact Zip for servicing.

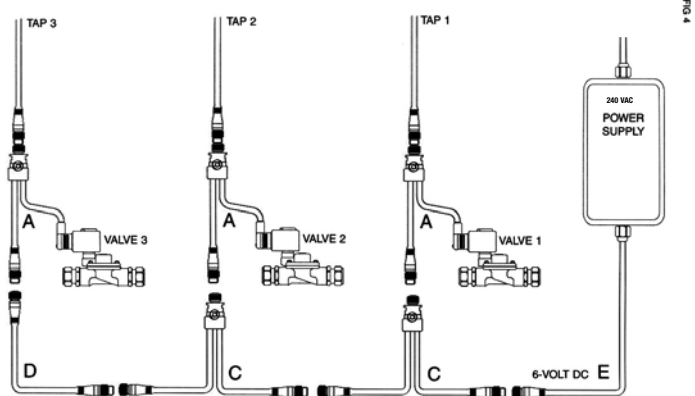
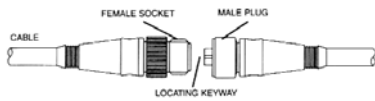
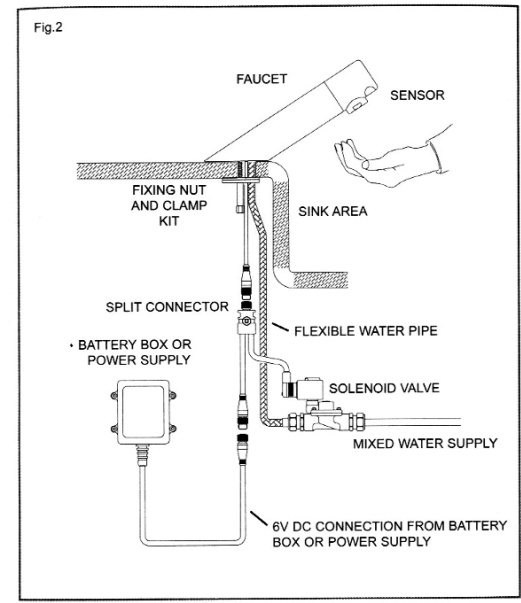
For general cleaning do not use abrasive cleaners or materials, only use soap and water or non-abrasive cleaners.

Installation details

Wall installation detail



Deck installation detail



Multi / AC mains Installation

NOTE: You must only use the Zip power supply unit. The use of an alternative unit may cause damage.

Power specifications:

Input: 100 - 240 V AC

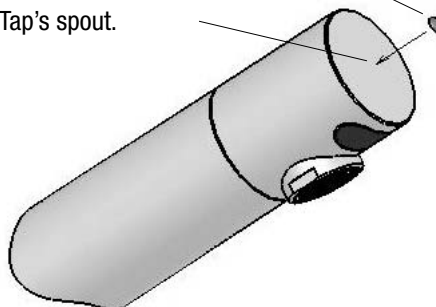
Current: 0.3 A

Freq.: 50 - 60 Hz.

Output: 6 V DC

Instructions for Attaching Colour Coded Sticker on AquaSense Tap

Attach Colour Coded Temperature Sticker at the front face of the Tap's spout.



NOTE: Plumber must attach the appropriate colour coded sticker compliant to local Water Regulatory requirements to indicate the water temperature dispensed by the Tap.

Fault Finding

Fault	Remedy
Tap will not operate	Check electrical connections, Check fuses (mains models only), Check for input voltage (6VDC), Check / Clean all connections, Check for cable damage, Dis-connect power supply and re-connect after 30 seconds, Check water is on and flowing, Check solenoid valve is fitted correctly, Check valve for operation, Check for debris in valve, Water pressure is too low / high check pressure reading.
Tap operates in reverse. (Runs when hands are not present)	Reversed valve polarity (Contact manufacturer)
Tap operates intermittently	Clean sensor lens with non-abrasive material only, Tap may be installed too close to a R.F. interference source, Tap may be installed too close to very bright lighting or highly reflective surroundings, Water pressure may be too low for valve to operate reliably (min 70kPa required), Voltage too low check output supply (power supply unit or battery, Lithium only)

Warranty

Certain warranties may be implied by law into your contract with Zip. The warranty provided below is additional to these implied warranties and nothing set out below shall limit your statutory rights or rights at law.

Zip Heaters (Aust) Pty Ltd warrants that, should any part fail within 12 calendar months of installation, that part will be repaired or replaced free of charge by Zip or its Distributor or Service Provider, except as set out below, provided the appliance is installed and used strictly in accordance with the instructions supplied, and that failure is not due to accident, misuse, abuse, unsuitable water conditions, or to any alteration, modification or repair by any party not expressly nominated by Zip.

No costs are payable by the customer other than any mileage or travelling-time charges incurred by a Zip Service Provider or the cost of removal, cartage and re-installation of any component of the appliance if it needs to be returned for repair to Zip or its Distributor.

This warranty does not cover damage resulting from non-operation of the appliance, the use of non authorised parts or consequential damage to any other goods, furnishings or property.

No warranty applies to the life of any filtration cartridge installed with the appliance as cartridge life may vary according to water quality and the rate of water consumption.

Zip does not exclude, restrict or modify any liability that cannot be excluded, restricted or modified or which cannot, except to a limited extent, be excluded, restricted or modified as between the owner or user and Zip under the laws applicable.

Furthermore, this warranty does not displace any statutory warranty, but, to the extent to which Zip is entitled to do so, the liability of Zip under any statutory warranty will be limited at Zip's option to the replacement of the appliance or supply of equivalent appliance, the payment of the cost of replacing the appliance or acquiring an equivalent appliance, or the payment of the cost of having the appliance repaired or the repair of the appliance.

Registering your purchase.

Registering your Zip installation on the Zip website may help to establish a date of installation should it become necessary to service the appliance under the terms of the Zip warranty. To register your installation go to www.zipheaters.com and look under the heading "Warranty".



Contact:

Zip Heaters (Aust) Pty. Ltd.
 ABN 46 000 578 727
 67 Allingham Street, Condell Park NSW 2200
 Postal: Locked Bag 80, Bankstown 188

Website: WWW.zipheaters.com
 Facsimile(02) 9796 3858
 Telephone(02) 9796 3100
 Free Call 1 800 638 633

Zip AquaSense tap distributed by Zip Heaters (Aust.) Pty Ltd.
 Manufactured by Dart Valley services UK